



**CLIENT:**  
Innu Project Management  
Colby Construction Warehouse

**DATE:** 2007

**PROJECT HIGHLIGHTS:**

- Working drawings for GSC.

**COLBY CONSTRUCTION WAREHOUSE**

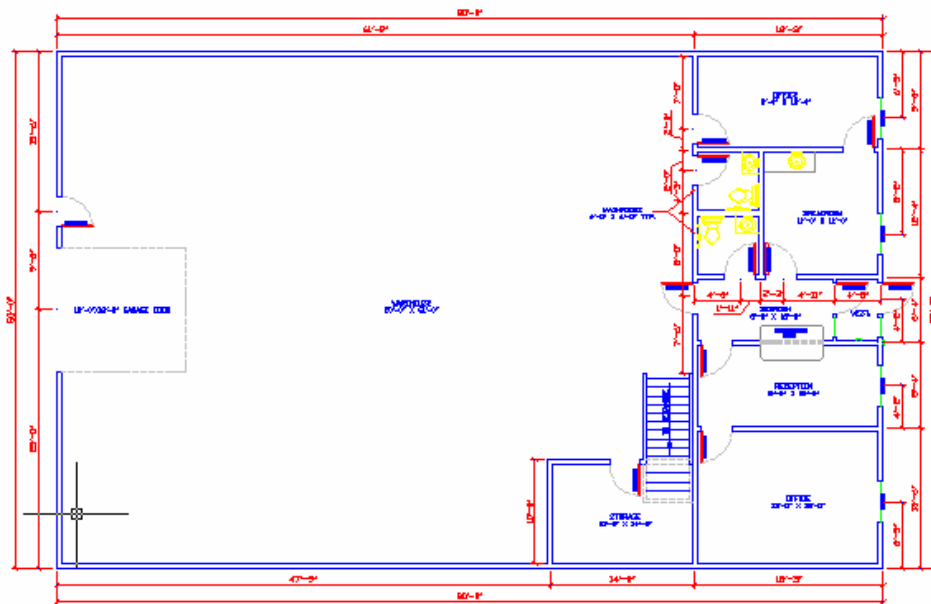
**PROJECT DESCRIPTION:**

**COMMERCIAL ARCHITECTURE**

Lyall's Drafting & Design Ltd was retained by Innu Project Management to provide a complete set of working drawings for submission to Government Services Canada.

Provision of working drawings for the construction of a 1500 sq. ft. warehouse with office space frontage. Drawings included elevations, floor plans, sections, plot location and all details required to satisfy the GSC requirements for fire, life & safety.

Services provided consist of architectural and survey drafting.



**Lyall's Drafting & Design Ltd.**

Suite 205  
PO Box 1192 Stn. C  
Happy Valley - Goose Bay  
NL, A0P-1C0

Phone: 709-896-2011  
Toll Free: 1-877-896-2011  
Fax: 709-896-2018

www.lyalldrafting.com  
E-mail: info@lyalldrafting.com