

CLIENT:
SNC-Lavalin

Lower Churchill Hydro Project

DATE: 2008

PROJECT HIGHLIGHTS:

- GIS Geodatabase design
- Photogrammetry
- Map Production

PROPOSED ALTERNATE TRANSPORTATION ROUTES

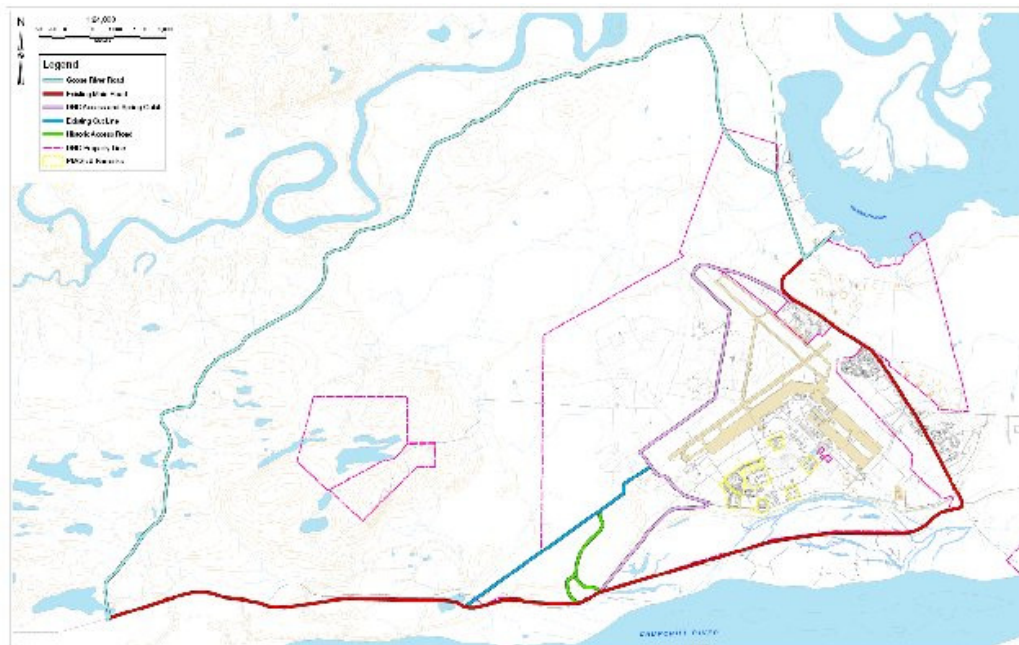
PROJECT DESCRIPTION:

LOWER CHURCHILL HYDRO PROJECT

Lyall's Drafting & Design Ltd was contracted by SNC-Lavalin to provide CADD & GIS services in support of the Lower Churchill Hydro Development Project.

This project consisted of mapping out proposed alternate transportation routes to the Project site.

Services provided consist of GIS Geodatabase design, development, implementation and management; General drafting support; Photogrammetry and subsequent mapping.



Lyall's Drafting & Design Ltd.

Suite 205
367 Hamilton River Road
PO Box 1192 Stn. C
Happy Valley - Goose Bay
NL, A0P-1C0

Phone: 709-896-2011
Toll Free: 1-877-896-2011
Fax: 709-896-2018
www.lyallsdrafting.com
E-mail: info@lyallsdrafting.com